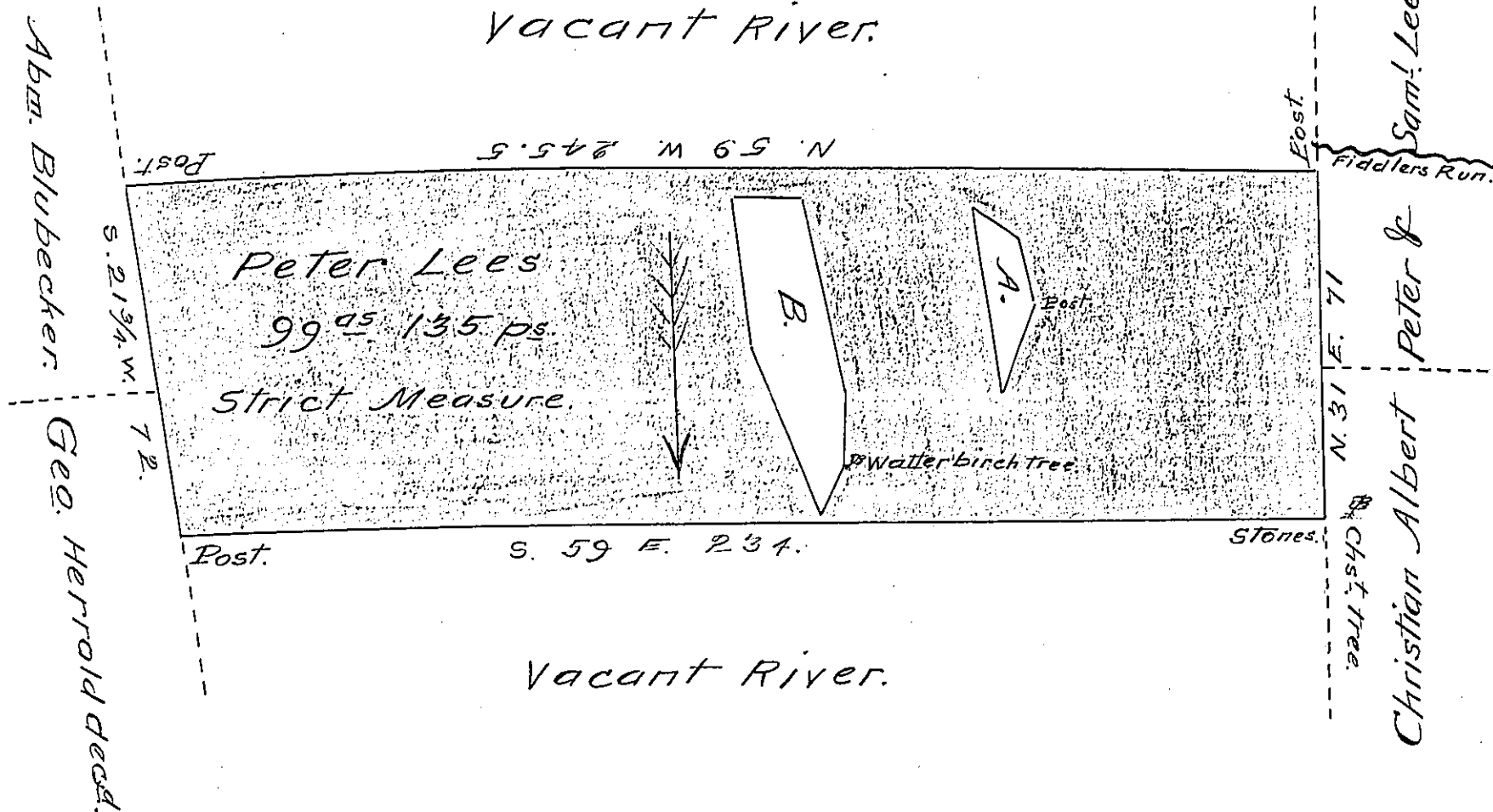


FORM No. 1.



SITUATE on the bed of the Susquehanna River in Lower Mahanoy Township North<sup>d</sup> County Containing Ninety-nine acres & one hundred & thirty five perches strict measure Surveyed unto Peter Lees the 3<sup>rd</sup>. day of October 1848 by virtue of his Warrent dated the 22<sup>nd</sup>. of September 1848.

John Laporte Esqr. } Abm Shipman D.S.  
Surveyor General }

The Island Marked A is Called Geo. Browns's but supposed to be vacant. Beginning at a post thence N. 16 1/2 E. 13 pr. to a Water birch stump. N. 29 W. 11 pr. to a post. S. 20 3/4 W. 37.7 pr. to a post N. 49 E. 20 pr. to a post the place of Beginning Containing 1<sup>st</sup>. 66 pr. Strict measure.

The Island Marked B belongs to Peter & Saml Lees's. Beginning at a Water birch tree thence N. 34 E. 15 pr. to a post N. 19 E. 39.5 pr. to a post. N. 59 W. 13.7 pr. to a post. S. 25 W. 30 pr. to a button wood stump. S. 7 1/2 W. 36 pr. to a post. N. 54 E. 10 pr. to a Water birch tree the place of beginning Containing 5<sup>th</sup>. 8 pr. Strict measure. A. S. D.S.

IN TESTIMONY that the above is a copy of the original remaining on file in the Department of Internal Affairs of Pennsylvania, made conformably to an Act of Assembly approved the 16th day of February 1833, I have hereunto set my hand and caused the Seal of said Department to be affixed at Harrisburg, this Seventeenth day of January 1908.

Henry Houch  
Secretary of Internal Affairs.